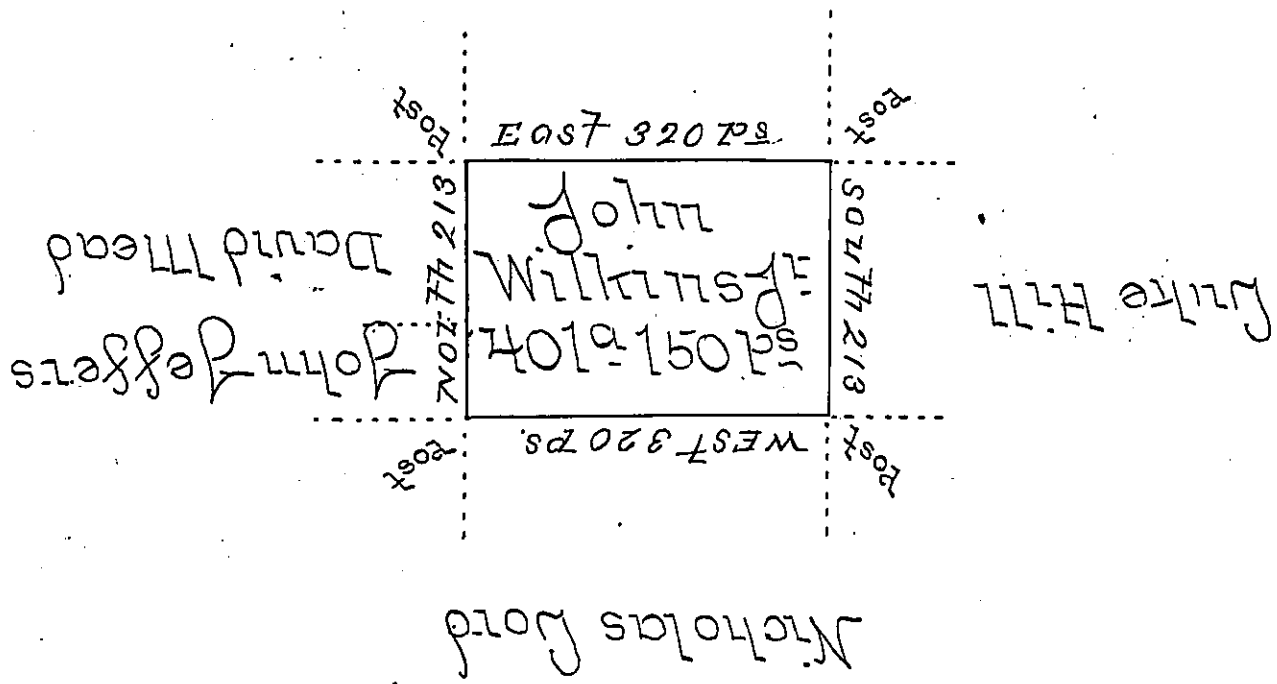


Charles Levi



Situate on the East Side of French Creek ^{now Crawford} Allegheny County Con-
 taining 401a-150 perches and Allowance of Six Per Cent.
 &c. Resurveyed this 20th day of Sept: 1797. on a warrant
 granted to John Wilkins of Bearing date the 18th day of
 March 1796. [It being the same Tract of Land surveyed
 the 6th day of May 1794 to Dupry in pursuance of his
 improvement dated the 1st day of Apr: 1792

John Power D^y SE

To Daniel Brodhead Esq^r }
 Surveyor General = }

IN TESTIMONY that the above is a copy of the original remaining on file in
 the Department of Internal Affairs of Pennsylvania, made
 conformably to an Act of Assembly approved the 16th day of
 February, 1833, I have hereunto set my Hand and caused
 the Seal of said Department to be affixed at Harrisburg,
 this fourth day of July 1899.

James W. Latta
 Secretary of Internal Affairs.